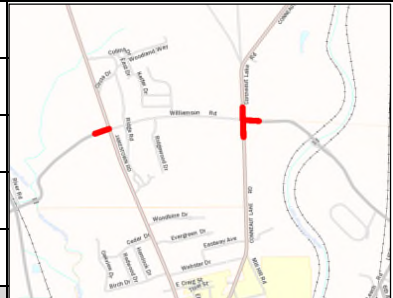


\* Positive number denotes a surplus/Negative denotes a deficit

MPO Tech./Coord. Committee Concurrence - November 12, 2019

Administrative Modification #1			Fund Type		FFY 2019			FFY 2020			FFY 2021			FFY 2022			Beyond FFYs			TOTAL PROJECT COST (EST.)	Remarks	Project Location:			
Project Title	MPMS	Phase	Amts	Fed	St	Fed (\$)	State (\$)	Loc/Oth (\$)	Fed (\$)	State (\$)	Loc/Oth (\$)	Fed (\$)	State (\$)	Loc/Oth (\$)	Fed (\$)	State (\$)	Loc/Oth (\$)	Fed (\$)	State (\$)	Loc/Oth (\$)					
Mercer Highway/Bridge Line Item						74,266			159,000			1,163,000													
Mercer County	106423	CON	Before	HSIP		200,000			600,000			(800,000)													
			Adjust	HSIP																					
			After	HSIP		274,266	0	0	759,000	0	0	363,000	0	0	0	0	0	0	0	0	0	0	0	0	
PA 18/4006 Intersection			Before	HSIP		150,000			150,000																
Mercer County	110234	FD	Adjust	HSIP		(150,000)																			
18/S01			After	HSIP		0	0	0	150,000	0	0	0	0	0	0	0	0	0	0	0	0	0	0	0	
PA 18/4006 Intersection			Before	HSIP		25,000			25,000																
Mercer County	110234	UTIL	Adjust	HSIP		(25,000)																			
18/S01			After	HSIP		0	0	0	25,000	0	0	0	0	0	0	0	0	0	0	0	0	0	0	0	
PA 18/4006 Intersection			Before	HSIP		25,000			25,000																
Mercer County	110234	ROW	Adjust	HSIP		(25,000)																			
18/S01			After	HSIP		0	0	0	25,000	0	0	0	0	0	0	0	0	0	0	0	0	0	0	0	
PA 18/4006 Intersection			Before	HSIP		800,000			800,000																
Mercer County	110234	CON	Adjust	HSIP					(800,000)																
18/S01			After	HSIP		0	0	0	0	0	0	800,000	0	0	0	0	0	0	0	0	0	0	0	0	
Project Description:					Narrative/Notes:																				
This project includes the intersection realignment and upgrade at SR 18 and SR 4006 (Williamson Rd) in Hempfield, West Salem and Sugar Grove Townships. This realignment will eliminate the offset and improve sight distance.					Administrative Modification to the SVTS MPO 2019 TIP to defer funding on PA 18/4006 Intersection MPMS# 110234 FD, UTL, ROW, and CON phases, using the Mercer Highway Bridge line item as a balancing source.																				
The intersection of SR 18 and SR 4006 Williamson Rd) Hempfield, West Salem and Sugar Grove Townships. Safety Improvements																									
Opposing legs of the intersection do not align properly to allow for the optimal and safe flow of traffic. Improvements will consist of realigning the intersection, radii adjustments and providing increased sight distance																									
Administrative Modification #2			Fund Type		FFY 2019			FFY 2020			FFY 2021			FFY 2022			Beyond FFYs			TOTAL PROJECT COST (EST.)	Remarks	Project Location:			
Project Title	MPMS	Phase	Amts	Fed	St	Fed (\$)	State (\$)	Loc/Oth (\$)	Fed (\$)	State (\$)	Loc/Oth (\$)	Fed (\$)	State (\$)	Loc/Oth (\$)	Fed (\$)	State (\$)	Loc/Oth (\$)	Fed (\$)	State (\$)	Loc/Oth (\$)					
US 62/State St Intersection			Before	STP		594,824			442,000																
Mercer County	105775	CON	Adjust	STP		(451,695)			(442,000)																
62/S01			After	STP		143,129	0	0	0	0	0	0	0	0	0	0	0	0	0	0	0	0	0	0	
Mercer Highway/Bridge Line Item			Before	STP																					
Mercer County	106423	CON	Adjust	STP		451,695			442,000																
			After	STP		451,695	0	0	442,000	0	0	0	0	0	0	0	0	0	0	0	0	0	0	0	
Project Description:					Narrative/Notes:																				
The purpose of this project is to provide an efficient and safer intersection for both vehicles and pedestrians. Need(s): Congestion issues plague this intersection and the corridor. The intersection shows up on high-crash list locations for the Shenango Valley MPO. Pedestrian access near the intersection and mall is not defined and current ADA criteria are not met.					Administrative Modification to the SVTS MPO 2019 TIP to decrease the US 62/State St Intersection MPMS# 105775 Con Phase. Returning funds to Line Item to match Low Bid + Inspection, using the Mercer Highway Bridge line item as a balancing source.																				
This project is an intersection safety improvement project constructing a roundabout which includes pedestrian accommodations including ADA ramps and crosswalks, and landscaping which was outlined in a 2012 PCTI (Pennsylvania Community Transportation Initiative) study along this corridor.																									



Administrative Modification #3				Fund Type		FFY 2019			FFY 2020			FFY 2021			FFY 2022			Beyond FFYs			TOTAL PROJECT COST (EST.)	Remarks	Project Location:			
Project Title	MPMS	Phase	Amts	Fed	St	Fed (\$)	State (\$)	Loc/Oth (\$)	Fed (\$)	State (\$)	Loc/Oth (\$)	Fed (\$)	State (\$)	Loc/Oth (\$)	Fed (\$)	State (\$)	Loc/Oth (\$)	Fed (\$)	State (\$)	Loc/Oth (\$)						
Mercer Group 452 Mercer County 18/452	104859	CON	Before	STU		412																	Deobligation	DEOB used as source of funds. DEOB # 111582		
			Adjust	STU		(412)																				
			After	STU		0	0	0	0	0	0	0	0	0	0	0	0	0	0	0	0	0				0
Perry Hwy/Li Sheng River Mercer County 19/B05	1866	FD	Before	STU		2,024																	Deobligation	DEOB used as source of funds. DEOB # 114282		
			Adjust	STU		(2,024)																				
			After	STU		0	0	0	0	0	0	0	0	0	0	0	0	0	0	0	0	0				0
Perry Hwy/Li Sheng River Mercer County 19/B05	1866	FD	Before	STU		13,176																	Deobligation	DEOB used as source of funds. DEOB # 114282		
			Adjust	STU		(1,376)																				
			After	STU		11,800	0	0	0	0	0	0	0	0	0	0	0	0	0	0	0	0			0	
SR 18/Rutlege Rd Intersection Mercer County 18/S01	105773	PE	Before	STU		61,439																	Deobligation	DEOB used as source of funds. DEOB # 114283		
			Adjust	STU		(61,439)																				
			After	STU		0	0	0	0	0	0	0	0	0	0	0	0	0	0	0	0	0			0	
SR 18/Edgewood Dr Intersection Mercer County 18/S02	106595	PE	Before	STU		78,835																	Deobligation	DEOB used as source of funds. DEOB # 111655		
			Adjust	STU		(44,206)																				
			After	STU		34,629	0	0	0	0	0	0	0	0	0	0	0	0	0	0	0	0			0	
Hamilton Ave Improvements Mercer County /MML	106750	CON	Before	STU																			\$890,360	Obligating DEOB STU funds to cover the STU obligation awarded by the planning partner		
			Adjust	STU		109,457																				
			After	STU		109,457	0	0	0	0	0	0	0	0	0	0	0	0	0	0	0	0			0	
Project Description:											Narrative/Notes:															
This project includes 1525 LF of restoration on Hamilton Ave between Stevenson and Kedron Streets in the city of Farrell. Work will involve milling and bituminous paving, adjusting a manhole, repair of a storm sewer inlet along with retaining wall repair, ADA compliant curb ramps, sidewalks, landscaping and pavement markings, Mercer County.											Administrative Modification to the SVTS MPO 2019 TIP to increase Hamilton Ave Improvements Con. MPMS# 106750. \$109,457 STU funds in FFY 2019, using available deobligations as a fund source.															

Administrative Modification #4				Fund Type		FFY 2019			FFY 2020			FFY 2021			FFY 2022			Beyond FFYs			TOTAL PROJECT COST (EST.)	Remarks	Project Location:			
Project Title	MPMS	Phase	Amts	Fed	St	Fed (\$)	State (\$)	Loc/Oth (\$)	Fed (\$)	State (\$)	Loc/Oth (\$)	Fed (\$)	State (\$)	Loc/Oth (\$)	Fed (\$)	State (\$)	Loc/Oth (\$)	Fed (\$)	State (\$)	Loc/Oth (\$)						
Mercer Highway/Bridge Line IItem Mercer County	106423	CON	Before	STP		451,695																	Line Item	Line Item used as source of funds		
			Adjust	STP		(318,300)																				
			After	STP		133,395	0	0	0	0	0	0	0	0	0	0	0	0	0	0	0	0				0
Fredonia Rd Br over I-79 Mercer County 1004/B01	88481	CON	Before	STP		800,000																	\$1,228,300	Increasing CON phase estimate to match the Federal Aid Estimate for advertisement.		
			Adjust	STP		(318,300)																				
			After	STP		1,118,300	0	0	0	0	0	0	0	0	0	0	0	0	0	0	0	0				0
Project Description:											Narrative/Notes:															
This project includes the rehabilitation/restoration of the State Route 1004 (Fredonia Road) Stoneboro Bridge over Interstate 79 (Raymond P Shafer Highway) in Lake Township, Mercer County. The bridge is 228 feet in length.											Administrative Modification to the SVTS MPO 2019 TIP to increase Fredonia Rd Br over I-79 MPMS# 88481Con Phase. \$318,300 STP Funds using the Mercer Highway Bridge line item as a fund source. Increasing CON phase estimate to match the Federal Aid Estimate for advertisement.															




Administrative Modification #5			Fund Type		FFY 2019			FFY 2020			FFY 2021			FFY 2022			Beyond FFYs			TOTAL PROJECT COST (EST.)	Remarks	Project Location:					
Project Title	MPMS	Phase	Amts	Fed	St	Fed (\$)	State (\$)	Loc/Oth (\$)	Fed (\$)	State (\$)	Loc/Oth (\$)	Fed (\$)	State (\$)	Loc/Oth (\$)	Fed (\$)	State (\$)	Loc/Oth (\$)	Fed (\$)	State (\$)	Loc/Oth (\$)							
Mercer Highway/Bridge Line Item Mercer County	106423	CON	Before	HSIP																				Line Item used as source of funds.			
			Adjust	HSIP																							
			After	HSIP			0	0	0	0	963,000	0	0	0	159,000	0	0	0	0	0	0	0	0	0		0	
Mercer Highway/Bridge Line Item Mercer County	106423	CON	Before	CAQ			15,000																	Line Item used as source of funds.			
			Adjust	CAQ			(15,000)																				
			After	CAQ			0	0	0	0	0	0	0	0	0	0	0	0	0	0	0	0	0	0		0	
PA18/SR 4005 Intersection Mercer County 18/S04	110764	CON	Before	STP																				Line Item used as source of funds.			
			Adjust	STP																							
			After	STP			0	0	0	0	0	0	0	0	0	0	0	0	0	0	0	0	0	0		0	
PA18/SR 4005 Intersection Mercer County 18/S04	110764	CON	Before	HSIP																				Moving LET to 2021. Moving funds to match new LET. Funds being placed on 47920.			
			Adjust	HSIP																							
			After	HSIP			0	0	0	0	0	0	0	0	204,000	0	0	0	0	0	0	0	0	0	0		
PA18/SR 4005 Intersection Mercer County 18/S04	110764	CON	Before	CAQ																				Moving LET to 2021. Moving funds to match new LET. Funds being placed on 47920.			
			Adjust	CAQ																							
			After	CAQ			0	0	0	0	0	0	0	0	0	0	0	0	0	0	0	0	0	0	0		
Mercer Avenue Intersections Mercer County 418/01S	47920	CON	Before	STP																				Increasing CAQ funds on project in 2020 and changing cash flow			
			Adjust	STP																							
			After	STP			0	0	0	0	0	0	0	0	0	0	0	0	0	0	0	0	0	0	0		
Mercer Avenue Intersections Mercer County 418/01S	47920	CON	Before	CAQ																				Increasing CAQ funds on project in 2020 and changing cash flow			
			Adjust	CAQ																							
			After	CAQ			15,000																				
Project Description:											Narrative/Notes:																
This project includes congestion reduction and safety improvements at the intersection of State Route 418 (Mercer Avenue) and State Route 518 and the intersection of State Route 418 and Roemer Boulevard (SR 3006) in the City of Farrell, Mercer County. Work involves the replacement of the existing signals along with intersection improvements including signal coordination, detection, ADA compliant curb ramps, sidewalks, the addition of protected turning phases, and the addition of turning lanes where needed.											Administrative Modification to the SVTS MPO 2019 TIP to increase Mercer Avenue Intersections MPMS# 47920 Con Phase. \$15,000 CMAQ funds in FFY 2019 and \$546,000 CMAQ funds in FFY 2020, using the PA18/SR 4005 Intersection and Mercer Highway Bridge line item as a fund source.																

Administrative Modification #6			Fund Type		FFY 2019			FFY 2020			FFY 2021			FFY 2022			Beyond FFYs			TOTAL PROJECT COST (EST.)	Remarks	Project Location:				
Project Title	MPMS	Phase	Amts	Fed	St	Fed (\$)	State (\$)	Loc/Oth (\$)	Fed (\$)	State (\$)	Loc/Oth (\$)	Fed (\$)	State (\$)	Loc/Oth (\$)	Fed (\$)	State (\$)	Loc/Oth (\$)	Fed (\$)	State (\$)	Loc/Oth (\$)						
Mercer Highway/Bridge Line Item Mercer County	106423	CON	Before	STP	581		133,395	42,500																Line Item used as source of funds.		
			Adjust	STP	581		(133,395)	(36,000)																		
			After	STP	581		0	6,500	0	431,395	57,500	0	0	0	0	0	0	0	0	0	0	0	0	0		
PA 173: Kocher Rd - Main Street Mercer County 173/A01	109154	UTIL	Before	STP	581		8,000	2,000																Increase UTIL phase for utility relocation estimates		
			Adjust	STP	581		133,395	36,000																		
			After	STP	581		141,395	38,000	0	10,605	0	0	0	0	0	0	0	0	0	0	0	0	0	0		
Project Description:											Narrative/Notes:															
This project entails widening and reconstruction of State Route 173 from Kocher Drive to East Main Street in Grove City Borough. Also included is highway restoration (paving, drainage and signal improvements) along State Route 173 from West Main Street to Cranberry Road in Grove City Borough, Mercer County.											Administrative Modification to the SVTS MPO 2019 TIP to increase PA 173: Kocher Rd - Main Street MPMS# 109154 UTL Phase. \$133,395 STP, \$36,000 state 581 funds in FFY 2019 and \$10,605 STP funds in FFY 2020, using the Mercer Highway Bridge line item as a fund source.															

Administrative Modification #7			Fund Type		FFY 2019			FFY 2020			FFY 2021			FFY 2022			Beyond FFYs			TOTAL PROJECT COST (EST.)	Remarks	Project Location:					
Project Title	MPMS	Phase	Amts	Fed	St	Fed (\$)	State (\$)	Loc/Oth (\$)	Fed (\$)	State (\$)	Loc/Oth (\$)	Fed (\$)	State (\$)	Loc/Oth (\$)	Fed (\$)	State (\$)	Loc/Oth (\$)	Fed (\$)	State (\$)	Loc/Oth (\$)							
Mercer Local Brdg Line Mercer County	98261	CON	Before	BOF		136,000			108,000															Line Item used as source of funds.			
			Adjust	BOF		(136,000)			136,000																	Line Item	
			After	BOF	0	0	0	0	0	0	244,000	0	0	0	0	0	0	0	0	0	0	0	0	0		0	0
Mercer Highway/Bridge Line Item Mercer County	106423	CON	Before	BOF	185	17,000	673,206						43,000													Line Item used as source of funds.	
			Adjust	BOF	185	(17,000)				361,153				102,000													Line Item
			After	BOF	185	0	673,206	0	0	0	361,153	0	0	0	145,000	0	0	0	0	0	0	0	0	0		0	0
Mill Road Bridge T-740 Mercer County /L00	1692	PE	Before	BOF		429,120																				DEOB Line Item used as source of funds. DEOB #114502	
			Adjust	BOF		(429,120)																					DEOB
			After	BOF	0	0	0	0	0	0	0	0	0	0	0	0	0	0	0	0	0	0	0	0		0	0
Walnut Street Bridge Mercer County /L00	1694	CON	Before	BOF		12,737																			DEOB Line Item used as source of funds. DEOB #113781		
			Adjust	BOF		(12,737)																				DEOB	
			After	BOF	0	0	0	0	0	0	0	0	0	0	0	0	0	0	0	0	0	0	0	0	0	0	
Parker Rd (T-613) Bridge Mercer County /L00	79224	FD	Before	BOF		4,072																			DEOB Line Item used as source of funds. DEOB #112989		
			Adjust	BOF		(4,072)																				DEOB	
			After	BOF	0	0	0	0	0	0	0	0	0	0	0	0	0	0	0	0	0	0	0	0	0	0	
Parker Rd (T-613) Bridge Mercer County /L00	79224	CON	Before	BOF		224																			DEOB Line Item used as source of funds. DEOB #113866		
			Adjust	BOF		(224)																				DEOB	
			After	BOF	0	0	0	0	0	0	0	0	0	0	0	0	0	0	0	0	0	0	0	0	0	0	
SR 2001 over Indian Run Brdg Mercer County 2001/B01	58080	CON	Before	BOF	185				498,000	150,000			102,000												Cash flowing for LET in 2020		
			Adjust	BOF	185	599,153				(497,153)				(102,000)												\$880,000	
			After	BOF	185	599,153	0	0	0	847	150,000	0	0	0	0	0	0	0	0	0	0	0	0	0	0	0	
<b>Project Description:</b>					<b>Narrative/Notes:</b>																						
This project includes the replacement of the State Route 2001 (New Castle Road) Bridge over Indian Run in Wilmington and Springfield Townships, Mercer County. The bridge is 30 feet in length.					Administrative Modification to the SVTS MPO 2019 TIP to advance SR 2001 over Indian Run Brdg MPMS# 58080 CON Phase. \$599,153 BOF Funds in FFY 2019, using the Mercer Highway Bridge line item and available deobligations as a fund source.																						

Administrative Modification #8			Fund Type		FFY 2019			FFY 2020			FFY 2021			FFY 2022			Beyond FFYs			TOTAL PROJECT COST (EST.)	Remarks	Project Location:						
Project Title	MPMS	Phase	Amts	Fed	St	Fed (\$)	State (\$)	Loc/Oth (\$)	Fed (\$)	State (\$)	Loc/Oth (\$)	Fed (\$)	State (\$)	Loc/Oth (\$)	Fed (\$)	State (\$)	Loc/Oth (\$)	Fed (\$)	State (\$)	Loc/Oth (\$)								
Mercer Highway/Bridge Line Item Mercer County	106423	CON	Before	581		42,500			57,500																Line Item used as source of funds.			
			Adjust	581		(2,500)			(57,500)																		Line Item	
			After	581	0	40,000	0	0	0	0	0	0	0	0	0	0	0	0	0	0	0	0	0	0	0		0	
SR 4011: PA 58 - PA 358 Mercer County 4011/01M	109146	UTIL	Before	581		50,000			50,000																used as source of funds.			
			Adjust	581		(30,000)			(50,000)																		\$1,450,000	
			After	581	0	20,000	0	0	0	0	0	0	0	0	0	0	0	0	0	0	0	0	0	0	0		0	
SR 4011: PA 58 - PA 358 Mercer County 4011/01M	109146	FD	Before	581		150,000			50,000																used as source of funds.			
			Adjust	581		(50,000)			(50,000)																			\$1,450,000
			After	581	0	100,000	0	0	0	0	0	0	0	0	0	0	0	0	0	0	0	0	0	0	0		0	
SR 4011: PA 58 - PA 358 Mercer County 4011/01M	109146	CON	Before	581					1,000,000																Increasing Funds in CON phase from other phases to cover increase in CON phase estimate during FD.			
			Adjust	581		82,500			157,500																	\$1,450,000		
			After	581	0	82,500	0	0	0	1,157,500	0	0	0	0	0	0	0	0	0	0	0	0	0	0	0	0		
<b>Project Description:</b>					<b>Narrative/Notes:</b>																							
The scope of the project is a 3R restoration/rehabilitation which includes mill & inlay, base repair, drainage updates, pavement markings, and ADA curb ramps. This project is located on SR 4011 (Columbia Ave.) from State Route 58 to State Route 358 in Greenville Borough and Hempfield Township; Mercer County.					Administrative Modification to the SVTS MPO 2019 TIP to increase SR 4011: PA 58 - PA 358 MPMS# 109146 CON Phase. \$82,500 state 581 Funds in FFY 2019 and \$157,500 State 581 funds in FFY 2020, using the Mercer Highway Bridge line item and SR 4011: PA 58 - PA 358 Pre Con phases as a fund source.																							

Administrative Modification #9				Fund Type		FFY 2019			FFY 2020			FFY 2021			FFY 2022			Beyond FFYs			TOTAL PROJECT COST (EST.)	Remarks	Project Location:			
Project Title	MPMS	Phase	Amts	Fed	St	Fed (\$)	State (\$)	Loc/Oth (\$)	Fed (\$)	State (\$)	Loc/Oth (\$)	Fed (\$)	State (\$)	Loc/Oth (\$)	Fed (\$)	State (\$)	Loc/Oth (\$)	Fed (\$)	State (\$)	Loc/Oth (\$)						
Mercer Highway/Bridge Line Item Mercer County	106423	CON	Before	185		673,206				902,750																
			Adjust	185		(150,000)			150,000																	
			After	185	0	523,206	0	0	1,052,750	0	0	0	0	0	0	0	0	0	0	0	0	0	0	0	0	0
SR 2002: Neshannock Ck Br Mercer County 2002/B01	58081	FD	Before	185						200,000																
			Adjust	185		150,000			(150,000)																	
			After	185	0	150,000	0	0	50,000	0	0	0	0	0	0	0	0	0	0	0	0	0	0	0	0	0
<b>Project Description:</b> This project includes the replacement of the State Route 2002 (Leesburg Road) Bridge over Neshannock Creek in Springfield Township, Mercer County. The bridge is 95 feet in length.												<b>Narrative/Notes:</b> Administrative Modification to the SVTS MPO 2019 TIP to advance SR 2002: Neshannock Ck Br MPMS# 58081 FD Phase. \$150,000 state 185 Funds in FFY 2019, using the Mercer Highway Bridge line item as a Balancing source.														
<b>Administrative Modification #10</b>				<b>Fund Type</b>		<b>FFY 2019</b>			<b>FFY 2020</b>			<b>FFY 2021</b>			<b>FFY 2022</b>			<b>Beyond FFYs</b>			<b>TOTAL PROJECT COST (EST.)</b>	<b>Remarks</b>	<b>Project Location:</b>			
Project Title	MPMS	Phase	Amts	Fed	St	Fed (\$)	State (\$)	Loc/Oth (\$)	Fed (\$)	State (\$)	Loc/Oth (\$)	Fed (\$)	State (\$)	Loc/Oth (\$)	Fed (\$)	State (\$)	Loc/Oth (\$)	Fed (\$)	State (\$)	Loc/Oth (\$)						
Mercer Highway/Bridge Line Item Mercer County	106423	CON	Before	185	0	523,206			0	1,052,750																
			Adjust	185		(500,000)			500,000																	
			After	185	0	23,206	0	0	1,552,750	0	0	0	0	0	0	0	0	0	0	0	0	0	0	0	0	
SR 3019 Br/Twel Wrks Run Mercer County 3019/B00	1831	CON	Before	185		244,000				500,000																
			Adjust	185		500,000			(500,000)																	
			After	185	0	744,000	0	0	0	0	0	0	0	0	0	0	0	0	0	0	0	0	0	0	0	
<b>Project Description:</b> This project includes the restoration/rehabilitation of the State Route 3019 (Orangeville Road) Bridge over Towel Works Run in the City of Hermitage. The bridge is 55 feet in length.												<b>Narrative/Notes:</b> Administrative Modification to the SVTS MPO 2019 TIP to advance SR 3019 Br/Twel Wrks Run MPMS# 1831 CON Phase. \$500,000 state 185 Funds in FFY 2019, using the Mercer Highway Bridge line item as a Balancing source.														
<b>Administrative Modification #11</b>				<b>Fund Type</b>		<b>FFY 2019</b>			<b>FFY 2020</b>			<b>FFY 2021</b>			<b>FFY 2022</b>			<b>Beyond FFYs</b>			<b>TOTAL PROJECT COST (EST.)</b>	<b>Remarks</b>	<b>Project Location:</b>			
Project Title	MPMS	Phase	Amts	Fed	St	Fed (\$)	State (\$)	Loc/Oth (\$)	Fed (\$)	State (\$)	Loc/Oth (\$)	Fed (\$)	State (\$)	Loc/Oth (\$)	Fed (\$)	State (\$)	Loc/Oth (\$)	Fed (\$)	State (\$)	Loc/Oth (\$)						
Mercer Highway/Bridge Line Item Mercer County	106423	CON	Before	185	0	23,206			0	1,552,750																
			Adjust	185		(23,206)			23,206																	
			After	185	0	0	0	0	1,575,956	0	0	0	0	0	0	0	0	0	0	0	0	0	0	0		
SR 2002: Neshannock Ck Bridge Mercer County 2002/B01	58081	FD	Before	185		150,000				50,000																
			Adjust	185		23,206			(23,206)																	
			After	185	0	173,206	0	0	26,794	0	0	0	0	0	0	0	0	0	0	0	0	0	0	0		
<b>Project Description:</b> This project includes the replacement of the State Route 2002 (Leesburg Road) Bridge over Neshannock Creek in Springfield Township, Mercer County. The bridge is 95 feet in length.												<b>Narrative/Notes:</b> Administrative Modification to the SVTS MPO 2019 TIP to advance SR 2002: Neshannock Ck Bridge MPMS# 58081 FD Phase. \$23,206 state 185 Funds in FFY 2019, using the Mercer Highway Bridge line item as a Balancing source.														

Administrative Modification #12				Fund Type		FFY 2019			FFY 2020			FFY 2021			FFY 2022			Beyond FFYs			TOTAL PROJECT COST (EST.)	Remarks	Project Location:			
Project Title	MPMS	Phase	Amts	Fed	St	Fed (\$)	State (\$)	Loc/Oth (\$)	Fed (\$)	State (\$)	Loc/Oth (\$)	Fed (\$)	State (\$)	Loc/Oth (\$)	Fed (\$)	State (\$)	Loc/Oth (\$)	Fed (\$)	State (\$)	Loc/Oth (\$)						
<p><b>MA# 114805 Committed</b></p> <p>Project Description:            This project includes the intersection realignment and upgrade at SR 18 and SR 4006 (Williamson Rd) in Hempfield, West Salem and Sugar Grove Townships. This realignment will eliminate the offset and improve sight distance.</p> <p>The intersection of SR 18 and SR 4006 Williamson Rd) Hempfield, West Salem and Sugar Grove Townships. Safety Improvements</p> <p>Oposing legs of the intersection do not align properly to allow for the optimal and safe flow of traffic. Improvements will consist of realigning the intersection, radii adjustments and providing increased sight distance</p>																										
Merger Highway/Bridge Line Item	106423	CON	Before	HSIP		274,266			0															Line Item Used as Source of Funds.		
Merger County			Adjust	HSIP		(274,266)																	Line Item			
			After	HSIP		0	0	0	0	0	0	0	0	0	0	0	0	0	0	0	0	0				
PA 18/4006 Intersection	110234	PE	Before	HSIP		200,000																		Increasing PE for Scoping		
Merger County			Adjust	HSIP		274,266																				
			After	HSIP		474,266	0	0	0	0	0	0	0	0	0	0	0	0	0	0	0	0				
<p><b>Narrative/Notes:</b></p> <p>Administrative Modification to the SVTS MPO 2019 TIP to increase PA 18/4006 Intersection MPMS# 110234 PE Phase. \$274,266 HSIP Funds in FFY 2019, using the Mercer Highway Bridge line item as a fund source.</p>																										
<p><b>Administrative Modification #13</b></p> <p>Project Description:            This project includes pedestrian improvements along State Street (SR 3008) between Boyd Drive to SR 18. It also includes intersection improvements that will extend about 300' north and south along Buhl Farm Drive (SR 3025), Mercer County.</p>																										
Merger Highway/Bridge Line Item	106423	CON	Before	NHPP	581								1,434,500											Line Item to be used as Source of Funds		
Merger County			Adjust	NHPP	581					101,041			(101,041)										Line Item			
			After	NHPP	581	0	0	0	0	101,041	0	0	1,333,459	0	0	0	0	0	0	0	0	0				
State St. Pedestrian Improvements	109077	CON	Before	NHPP	581				450,000	112,500			350,000	87,500										Cash Flow into 2021 for use on MPMS #96362		
Merger County			Adjust	NHPP	581					(101,041)			101,041													
			After	NHPP	581	0	0	0	450,000	11,459	0	350,000	188,541	0	0	0	0	0	0	0	0	0				
<p><b>Narrative/Notes:</b></p> <p>Administrative Modification to the SVTS MPO 2019 TIP to adjust cashflow for the State St. Pedestrian Improvements MPMS# 109077 Con Phase. \$101,041 state 581 funds in FFY 2021, using the Mercer Highway Bridge line item as a balancing source.</p>																										
<p><b>Administrative Modification #14</b></p> <p>Project Description:            This project includes .68 miles of restoration on State Route 3008 and State Route 518 (State Street) from Forker Boulevard to Oakland Avenue in the City of Sharon. Work involves resurfacing, ADA curb ramps, crosswalks, medians, signage, signal timing modifications, landscaping and furnishings.</p>																										
Merger Highway/Bridge Line Item	106423	CON	Before	STP	581				431,392	101,041														Line Item to be used as Source of Funds		
Merger County			Adjust	STP	581				(404,164)	(101,041)																
			After	STP	581	0	0	0	27,228	0	0	0	0	0	0	0	0	0	0	0	0	0				
SR 3008: State St Stscp	96362	CON	Before	STP	581																			Increase CON Phase to cover additional ADA requirements, Utility issues, and a cast in place retaining wall.		
Merger County			Adjust	STP	581				404,164	101,041																
			After	STP	581	0	0	0	404,164	101,041	0	0	0	0	0	0	0	0	0	0	0	0				
<p><b>Narrative/Notes:</b></p> <p>Administrative Modification to the SVTS MPO 2019 TIP to increase SR 3008: State St Stscp MPMS# 96362 Con Phase. \$404,164 STP funds and \$101,041 state 581 funds in FFY 2020, using the Mercer Highway Bridge line item as a fund source.</p>																										

