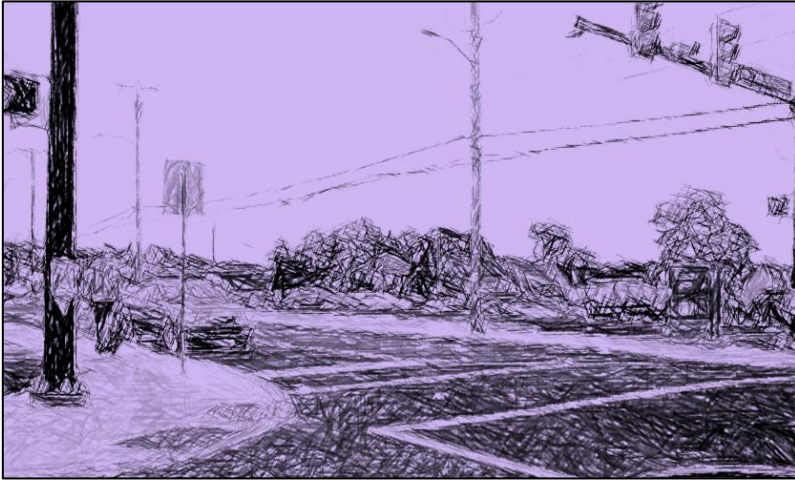


Annual Listing of Obligated Projects

Mercer County, PA



**Shenango Valley Area Transportation Study
Metropolitan Planning Organization
(SVATS MPO)**



Purpose

This annual listing of Mercer County, Pennsylvania's obligated projects is required through the current federal transportation bill. This bill, known as the Fixing America's Surface Transportation (FAST) Act, requires Metropolitan Planning Organizations (MPOs) to publish a list of all projects for which federal funds have been obligated in the previous year. This report responds to the requirements of this statute, listing the federally-funded transportation projects in Mercer County that were obligated in federal fiscal year (FFY) 2020, which began on October 1, 2019 and ended September 30, 2020.

The Federal Highway Administration (FHWA) defines obligation as the federal government's legal commitment to pay or reimburse states or other entities for the federal share of a project's eligible costs. Thus, an obligated project is one that has been approved by the federal government for reimbursement, though not necessarily reimbursed yet. Also, not all obligated projects were initiated or completed during the previous year, and the obligated project cost listed in this report does not always equal the total, final project cost.

About the SVATS MPO

The Shenango Valley Area Transportation Study (SVATS) MPO is a federally mandated organization responsible for transportation related issues in Mercer County. Professional staff members of the Mercer County Regional Planning Commission (MCRPC) run the daily business of the MPO. PennDOT District 1-0 and Central Office staffs work with the MCRPC staff on a near-daily basis and are intimately involved with the programming of funds and the implementation of projects. In addition to working with PennDOT, MPO staff works closely and collaboratively with our county's municipal officials, the general public, modal operators, other regional MPOs and RPOs (Rural Planning Organizations), and various other transportation stakeholders.

Two committees direct the work that the aforementioned staff accomplishes. The larger of the two committees is the Coordinating Committee. This group is responsible for ensuring the maintenance of planning eligibility for state and federal grants and the maintenance of both the Long-Range Transportation Plan (LRTP) and



the more short-range Transportation Improvement Program (TIP). This committee meets on a quarterly basis (additional meetings are occasionally held, if needed) to vote on any action items that come before the MPO and to discuss transportation-related issues in Mercer County. The MPO has 25 members, the maximum currently allowed according to our MPO's Bylaws. Most members are municipal-based, though the county, the county's transit provider, and PennDOT district and central office staffs have membership as well. The SVATS MPO continues to promote equal representation throughout the County.

The other MPO committee is the Technical Committee, which has the duty to study and report on technical aspects as directed by the Coordinating Committee and to initiate studies and recommendations on technical aspects in pursuance of the objectives of the UPWP. This committee meets on an as-needed basis. Since being re-activated in 2012, the committee meets an average of about twice a year.



Funding Codes and Project Phase Information

- Bridge Off**—Bridge off the Federal Aid System (locally owned)
- CMAQ**—Congestion Management and Air Quality Improvement Program
- Enhancements**—Transportation Alternatives Set-Aside Program
- NHPP**—National Highway Performance Program
- Safety Highway**—Safety Improvement Program
- STP**—Surface Transportation Program
- STU**—Surface Transportation Program-Urban Program
- Project Phase**—Project Phase Description
 - CON**—Construction
 - FD**—Final Design
 - PE**—Preliminary Engineering
 - ROW**—Right of Way
 - STUDY**—Study
 - UTL**—Utility

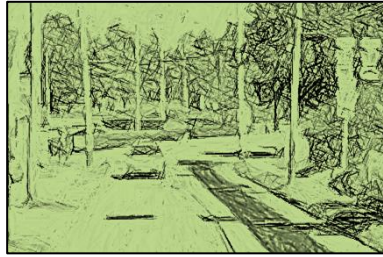
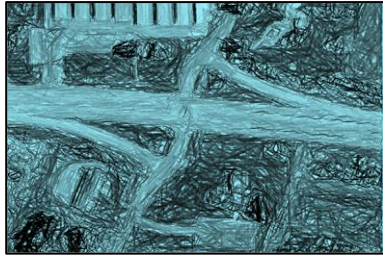
How to Read This Report

The charts on the following pages show each federally-obligated transportation project in Mercer County during federal fiscal year 2020. Each project is listed on its own row; the columns describe numerous attributes of each project. The column headings represent the following:

| | |
|-------------------------------------|---|
| MPMS/PROJECT # | Project Identification # in the Multimodal Project Management System (MPMS) |
| PROJECT TITLE | Name of the project in MPMS |
| PROJECT LIMITS | Defines project geographic limits |
| PROJECT DESCRIPTION | Defines project scope of work |
| PROJECT CLASS | Defines project work classification |
| RESPONSIBLE AGENCY/SPONSOR | Defines project ownership |
| PROJECT LENGTH | Defines project termini |
| PHASE | Defines phase of project (see project phase information listing above) |
| STATE ROUTE | State Route number for the project |
| OBLIGATION AMOUNT | Federal funds obligated during the time period of the report |
| FFY 2019-2022 | Dollars programmed for the project during each year of the 4-year TIP* |
| PROGRAM TOTAL | Total dollars programmed for the project during the 4-year TIP* |
| ESTIMATED TOTAL PROJECT COST | Total project cost estimate summary |

*- TIP is the Transportation Improvement Program, or the 4-year listing of programmed projects





SVATS MPO FFY 2020 HIGHWAY AND BRIDGE ANNUAL OBLIGATION REPORT (Page 1 of 3)

All projects are located in Mercer County, PA and PennDOT Engineering District 1-0

* Negative amounts in the obligation column are a result of de-obligating unused funds for a project. De-obligation is a release of funds due to either the cancelation or completion of a project

| MPMS # | PROJECT TITLE | PROJECT DESCRIPTION | PROJECT ADMINISTRATOR | PHASE | STATE ROUTE | OBLIGATION* FFY 2020 | PROG. TOTAL FFY 2019 TO 2022 | FED FUNDS REMAINING |
|--------|-------------------------------------|--|-----------------------|--------------|-------------|----------------------|------------------------------|---------------------|
| 106573 | Mercer 2020 AWPM | This project includes installing, repairing and replacing reflective all-weather pavement markers (AWPMs) on various state routes and in various municipalities in Mercer County in 2020. | PENNDOT | Construction | Various | \$90,005 | \$90,037 | \$33 |
| 1671 | Kelly Rd Brs T-388 (Dual) | This project includes the replacement of the Kelly Road (Township Road 388) Bridges over the Shenango River in the City of Hermitage. The project consists of replacing two existing adjacent bridges with one structure. The first structure is a Parker Thru Truss bridge that is closed to all traffic, including pedestrian. The second structure is a two-span steel beam bridge. In order to construct the new structure, the proposed action involves: constructing a causeway downstream of the existing bridges; installing temporary towers under the existing single-span truss bridge; cutting and removing end sections of the truss bridge (for preservation); demolishing the remainder of the truss bridge; removing the downstream causeway; constructing and maintaining a temporary bridge; constructing a causeway upstream of the existing bridges; demolishing the existing two-span steel beam bridge; demolishing the existing abutments and pier; constructing new abutments and a pier (in a similar location); constructing one new 2-span bridge in the same location and configuration as the two-span bridge; removing the upstream causeway; and removing the temporary bridge. | MERCER COUNTY | Construction | NA | \$3,831,000 | \$3,821,000 | \$(10,000) |
| 106750 | Hamilton Ave Improvements | This project includes 1525 LF of restoration on Hamilton Ave between Stevenson and Kedron Streets in the city of Farrell. Work will involve milling and bituminous paving, adjusting a manhole, repair of a storm sewer inlet along with retaining wall repair, ADA compliant curb ramps, sidewalks, landscaping and pavement markings. | CITY OF FARRELL | Construction | NA | \$71,000 | \$109,457 | \$38,457 |
| 111434 | Alan Avenue Sidewalk Project | The project is located on Alan Avenue from North Race Street to College Avenue in the Borough of Greenville, Mercer County. The focus of the project is to provide a sidewalk along the northern side of Alan Avenue to provide pedestrian access from North Race Street to College Avenue. Drainage improvements will also be made along with additional signage. These enhancements will greatly improve safety and provide a safe pedestrian connection from Thiel College to the Borough Park. | TOWN OF GREENVILLE | Construction | NA | \$912,600 | \$912,600 | \$0 |
| 98384 | PA 18: Birchwood-Rutledge | This project includes 2.31 miles of rehabilitation/restoration on State Route 18 (Hermitage Road) from Birchwood Drive to State Route 3022 (Rutledge Road) in Pymatuning Township, Mercer County. | PENNDOT | Construction | 18 | \$1,402,614 | \$1,402,614 | \$0 |
| 106765 | SR 18 & SR 518 Intersection (Bobby) | This project will include safety improvements at the intersection of SR 18 and 518 (Bobby's Corner's) and Longview Rd. in the City of Hermitage. These improvements will include ADA compliant curb ramps along with a complete signal upgrade which encompasses new poles and a left turn phase. | PENNDOT | Construction | 18 | \$3,450 | \$60,984 | \$57,534 |
| 114908 | Interstate 80 Roadside Safety Audit | This project includes a safety study and will make recommendations that will be used to complete safety improvements along the Interstate 80 corridor from MM 0 to MM 14 in Mercer County. This project is being funded with HSIP Set-Aside funds. | PENNDOT | Study | 80 | \$60,000 | \$60,000 | \$0 |

SVATS MPO FFY 2020 HIGHWAY AND BRIDGE ANNUAL OBLIGATION REPORT (Page 2 of 3)

All projects are located in Mercer County, PA and PennDOT Engineering District 1-0

* Negative amounts in the obligation column are a result of de-obligating unused funds for a project. De-obligation is a release of funds due to either the cancelation or completion of a project.

| MPMS # | PROJECT TITLE | PROJECT DESCRIPTION | PROJECT ADMINISTRATOR | PHASE | STATE ROUTE | OBLIGATION* FFY 2020 | PROG. TOTAL FFY 2019 TO 2022 | FED FUNDS REMAINING |
|--------|---------------------------------|--|-----------------------|-------------------------|-------------|----------------------|------------------------------|---------------------|
| 109154 | PA 173: Kocher Rd - Main Street | This project entails widening and reconstruction of State Route 173 from Kocher Drive to East Main Street in Grove City Borough. Also included is highway restoration (paving, drainage and signal improvements) along State Route 173 from West Main Street to Cranberry Road in Grove City Borough, Mercer County. | PENNDOT | Preliminary Engineering | 173 | \$20,000 | \$20,000 | \$0 |
| 109154 | PA 173: Kocher Rd - Main Street | | PENNDOT | Final Design | 173 | \$118,136 | \$118,136 | \$0 |
| 109154 | PA 173: Kocher Rd - Main Street | | PENNDOT | Utility | 173 | \$301,167 | \$301,167 | \$0 |
| 109154 | PA 173: Kocher Rd - Main Street | | PENNDOT | Right of Way | 173 | \$240,000 | \$240,000 | \$0 |
| 109154 | PA 173: Kocher Rd - Main Street | | PENNDOT | Construction | 173 | \$2,712,800 | \$2,793,968 | \$81,168 |
| 1923 | W. Middlesex Viaduct | This project includes the replacement of the State Route 318 (Main Street) West Middlesex Viaduct over Garfield Street, Consolidated Rail Corporation (DOT #544702Y), and the Shenango River in the Borough of West Middlesex, Mercer County. The bridge is 715 feet in length. | PENNDOT | Construction | 318 | \$100,000 | \$1,831,730 | \$1,731,730 |
| 47920 | Merger Avenue Intersections | This project includes congestion reduction and safety improvements at the intersection of State Route 418 (Merger Avenue) and State Route 518 and the intersection of State Route 418 and Roemer Boulevard (SR 3006) in the City of Farrell, Mercer County. Work involves the replacement of the existing signals along with intersection improvements including signal coordination, detection, ADA compliant curb ramps, sidewalks, the addition of protected turning phases, and the addition of turning lanes where needed. At the intersection of SR 418 (Merger Avenue) and SR 518 and SR 418 and Roemer Blvd (SR 3006); City of Farrell; Intersection Improvements consisting of New Mast Arms, Signal Heads, Radar Detection controller, ADA ramps, Ped Heads and a signal indicator for driveway. There will be some sidewalk placement along Sharon New castle Road to provide better access to the school and businesses on the NW of the school from Union St. | PENNDOT | Final Design | 418 | \$225,000 | \$225,000 | \$0 |
| 47920 | Merger Avenue Intersections | | PENNDOT | Utility | 418 | \$128,000 | \$128,000 | \$0 |
| 47920 | Merger Avenue Intersections | | PENNDOT | Right of Way | 418 | \$25,000 | \$25,000 | \$0 |
| 47920 | Merger Avenue Intersections | | PENNDOT | Construction | 418 | \$943,000 | \$975,000 | \$32,000 |
| 88481 | Fredonia Rd Br over I-79 | This project includes the rehabilitation/restoration of the State Route 1004 (Fredonia Road) Stoneboro Bridge over Interstate 79 (Raymond P Shafer Highway) in Lake Township, Mercer County. The bridge is 228 feet in length. | PENNDOT | Construction | 1004 | \$325,000 | \$1,743,300 | \$1,418,300 |
| 58080 | SR 2001 over Indian Run Brdg | This project includes the replacement of the State Route 2001 (New Castle Road) Bridge over Indian Run in Wilmington and Springfield Townships, Mercer County. The bridge is 30 feet in length. | PENNDOT | Construction | 2001 | \$494,015 | \$600,000 | \$105,985 |
| 1925 | Blacktown Rd Brdg/I-79 | This project includes the restoration/rehabilitation/replacement of the State Route 2006 (Blacktown Road) Bridge over Interstate 79 (Raymond P. Shafer Highway) in Springfield Township, Mercer County. Work involves the parapets, a waterproof membrane, patching the deck, substructure, beam patching, and plug dams. The bridge is 236 feet in length. | PENNDOT | Preliminary Engineering | 2006 | \$40,000 | \$76,153 | \$36,153 |
| 96362 | SR 3008: State St Stscp | This project includes .68 miles of restoration on State Route 3008 and State Route 518 (State Street) from Forker Boulevard to Oakland Avenue in the City of Sharon. Work involves resurfacing, ADA curb ramps, crosswalks, medians, signage, signal timing modifications, landscaping and furnishings. | PENNDOT | Construction | 3008 | \$404,164 | \$404,164 | \$0 |
| 102554 | State St Forker - PA 18 | This project includes restoration along State Route 3008 (State Street) from Forker Boulevard to State Route 18 in the City of Hermitage. Work involves paving, sidewalks, curbing, drainage improvements, intersection improvements and pedestrian accommodations. | PENNDOT | Construction | 3008 | \$946,648 | \$946,648 | \$0 |

SVATS MPO FFY 2020 HIGHWAY AND BRIDGE ANNUAL OBLIGATION REPORT (Page 3 of 3)

All projects are located in Mercer County, PA and PennDOT Engineering District 1-0

* Negative amounts in the obligation column are a result of de-obligating unused funds for a project. De-obligation is a release of funds due to either the cancelation or completion of a project

| MPMS # | PROJECT TITLE | PROJECT DESCRIPTION | PROJECT ADMINISTRATOR | PHASE | STATE ROUTE | OBLIGATION* FFY 2020 | PROG. TOTAL FFY 2019 TO 2022 | FED FUNDS REMAINING |
|--------|-----------------------------------|--|-----------------------|-------------------------|-------------|----------------------|------------------------------|---------------------|
| 109077 | State St. Pedestrian Improvements | This project includes pedestrian improvements along State Street (SR 3008) between Boyd Drive to SR 18. It also includes intersection improvements that will extend about 300' north and south along Buhl Farm Drive (SR 3025), Mercer County. | PENNDOT | Final Design | 3008 | \$150,000 | \$150,000 | \$0 |
| 109077 | State St. Pedestrian Improvements | | PENNDOT | Utility | 3008 | \$50,000 | \$50,000 | \$0 |
| 109077 | State St. Pedestrian Improvements | | PENNDOT | Right of Way | 3008 | \$250,000 | \$250,000 | \$0 |
| 106571 | Mercer 2018 AWP | This project includes installing, repairing and replacing reflective all-weather pavement markers (AWPMs) on various state routes and in various municipalities in Mercer County in 2018. | PENNDOT | Construction | Various | \$(25,000) | \$0 | \$0 |
| 105773 | SR 18/Rutledge Rd Intersection | This project includes safety improvements at the intersection of State Route 18 and Rutledge Road (State Route 3022) in Pymatuning Township. The scope of the improvements includes an intersection realignment and signal upgrade determined in PE. | PENNDOT | Construction | 18 | \$(43,803) | \$0 | \$0 |
| 106595 | SR 18/Edgewood Dr Intersection | This project includes safety improvements at the intersection of State Route 18 and Edgewood Drive in Pymatuning Township, Mercer County. The scope of the improvements will be determined during the preliminary engineering process. | PENNDOT | Construction | 18 | \$(11,488) | \$0 | \$0 |
| 104339 | Springfield Twp Trail | Construction of a new multimodal trail (bicycles and pedestrians) to greatly improve safety and enhance connectivity in Springfield Township along State Route 208. This is the first phase of several phases as part of the township master trail plan. | SPRINGFIELD TOWNSHIP | Construction | 208 | \$(2,492) | \$0 | \$0 |
| 1923 | W. Middlesex Viaduct | This project includes the replacement of the State Route 318 (Main Street) West Middlesex Viaduct over Garfield Street, Consolidated Rail Corporation (DOT #544702Y), and the Shenango River in the Borough of West Middlesex, Mercer County. The bridge is 715 feet in length. | PENNDOT | Final Design | 318 | \$(444,378) | \$0 | \$0 |
| 1817 | SR 318 Brg/Lil Nesh Ck | This project includes the bridge rehabilitation and superstructure replacement of the State Route 318 (Middlesex-Mercer Road) Bridge over Little Neshannock Creek in East Lackawanna Township. The bridge is 50 feet in length. | PENNDOT | Preliminary Engineering | 318 | \$(91,337) | \$0 | \$0 |
| 1817 | SR 318 Brg/Lil Nesh Ck | | PENNDOT | Construction | 318 | \$(30,325) | \$0 | \$0 |
| 1528 | Carlton Rd Br/New Lebanon | This project includes the replacement along with a twelve (12) mile detour of the State Route 1015 (Carlton Road) Bridge over French Creek and an at grade crossing with Western New York and Pennsylvania Railroad (DOT #262821C) in French Creek Township. The bridge is 276 feet in length. | PENNDOT | Preliminary Engineering | 1015 | \$(96,000) | \$0 | \$0 |
| 1528 | Carlton Rd Br/New Lebanon | | PENNDOT | Final Design | 1015 | \$(111,000) | \$0 | \$0 |
| 1528 | Carlton Rd Br/New Lebanon | | PENNDOT | Right of Way | 1015 | \$(43,000) | \$0 | \$0 |
| 102554 | State St Forker - PA 18 | This project includes restoration along State Route 3008 (State Street) from Forker Boulevard to State Route 18 in the City of Hermitage. Work involves paving, sidewalks, curbing, drainage improvements, intersection improvements and pedestrian accommodations. | PENNDOT | Final Design | 3008 | \$(42,000) | \$0 | \$0 |
| 111163 | Hermitage Bikeway Project | This project will add 5' bike lanes on either side of both Thorton Ave. & Forker Blvd., widen each lane to 10' for a total of 30' and realign the intersection from its current configuration of a "Y" to a "T" | PENNDOT | Construction | 3021 | \$(66,681) | \$471,500 | \$0 |



SVATS MPO FFY 2020 PUBLIC TRANSIT ANNUAL OBLIGATION REPORT

All projects are located in Mercer County, PA and PennDOT Engineering District 1-0

| MPMS # | PROJECT TITLE | PROJECT DESCRIPTION | FED FUND CATEGORY | OBLIGATED FEDERAL AMOUNT FFY 2020 | FEDERAL FUNDS REMAINING |
|--------|---|---|-------------------|-----------------------------------|-------------------------|
| 102220 | Revenue Rolling Stock - Under 30 Foot Buses | Acquiring two accessible buses to provide shared ride service | 5310 | \$100,681.00 | \$100,681.00 |
| 102638 | Bus Replacement | Fixed Route Bus | 5307 | \$183,645.00 | \$183,645.00 |
| 111059 | Bus Replacement | 14-Passenger (2) | 5307 | \$128,000.00 | \$128,000.00 |
| 83656 | Shop/Garage Equipment | Air Conditioner | 5307 | \$6,000.00 | \$6,000.00 |
| 83656 | Shop/Garage Equipment | Portable Jacks | 5307 | \$120,000.00 | \$120,000.00 |
| 83656 | Shop/Garage Equipment | Tire Changer | 5307 | \$6,400.00 | \$6,400.00 |
| 95412 | Safety Equipment | Signage and cabinet to hold flammable liquids | 5307 | \$5,200.00 | \$5,200.00 |
| 95413 | Flooring | Building Maintenance | 5307 | \$16,000.00 | \$16,000.00 |
| 95413 | Rehab Maintenance Garage | Building Maintenance (Roof) | 5307 | \$120,000.00 | \$120,000.00 |
| 95413 | Rehab Admin/Maintenance | Building Maintenance (Sidewalk) | 5307 | \$40,000.00 | \$40,000.00 |
| 95413 | ITS (AVAIL) | Mobile Fare Collection | 5307 | \$20,000.00 | \$20,000.00 |
| 106707 | Admin Vehicle | Support Vehicle for transit administrative staff | 5307 | 28,000.00 | \$28,000.00 |
| 77148 | ADA - 2020 | PARA TRANSIT | 5307 | \$67,626.00 | \$67,626.00 |
| 77148 | ADA - 2021 | PARA TRANSIT | 5307 | \$63,311.00 | \$63,311.00 |
| 83653 | PREVENTATIVE MAINT - 20 | Maintenance of transit assets | 5307 | \$180,000.00 | \$0.00 |
| 83653 | PREVENTATIVE MAINT - 21 | Maintenance of transit assets | 5307 | \$180,000.00 | \$180,000.00 |

